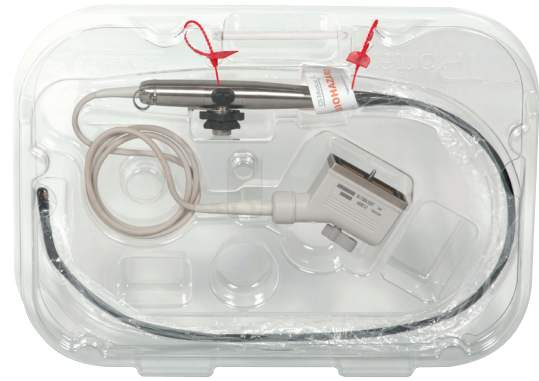


the right Tools

to help healthcare
staff reduce HAI's

TPorter TEE Probe Transportation Case



CS Medical and the TEE Complete Care™ line of products provide many different solutions to the everyday problems that healthcare workers encounter when reprocessing TEE ultrasound probes.



Job: TEE Probe Transport from procedure room to reprocessing area

Why: Once the TEE probe has been removed from the patient, it possesses a potential biological hazard to the staff.

Solution: TPorter™ TEE Probe Transportation Case

Once the TEE ultrasound probe has been enzymatically pre-cleaned, the healthcare professional should place the PullUp™ Bio-Barrier Sleeve, located within the TPorter case, onto the TEE ultrasound probe insertion tube. The purpose of the PullUp is to prevent the enzymatic and non-HLD components of the TEE ultrasound probe from contacting each other. The PullUp is designed to completely cover the insertion tube of the TEE ultrasound probe. The receiver cone also provides another identification label of the potential biohazard in the sealed, red-tagged TPorter transportation case.

When TPorter arrives at the point of reprocessing, the high-level disinfection technician will physically remove the red tag and slide the lid for removal and access to the soiled TEE ultrasound probe. The ultrasound probe should be removed from TPorter and reprocessing should begin per TEE ultrasound probe manufacturer's recommendation.

CS Medical

